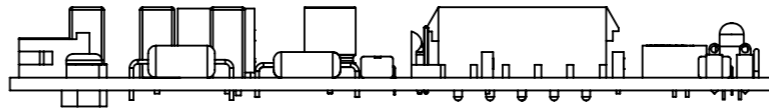
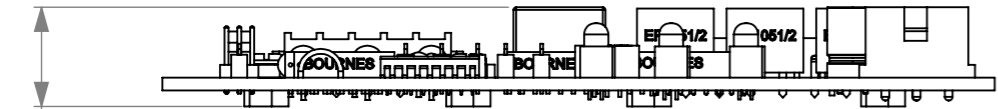
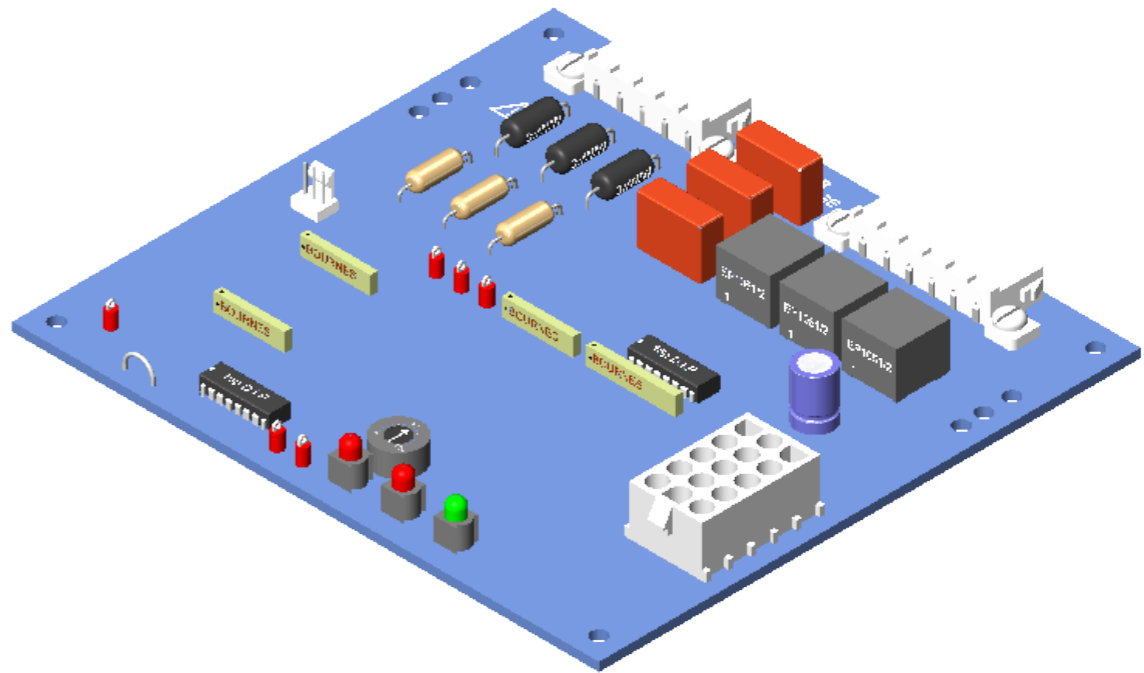
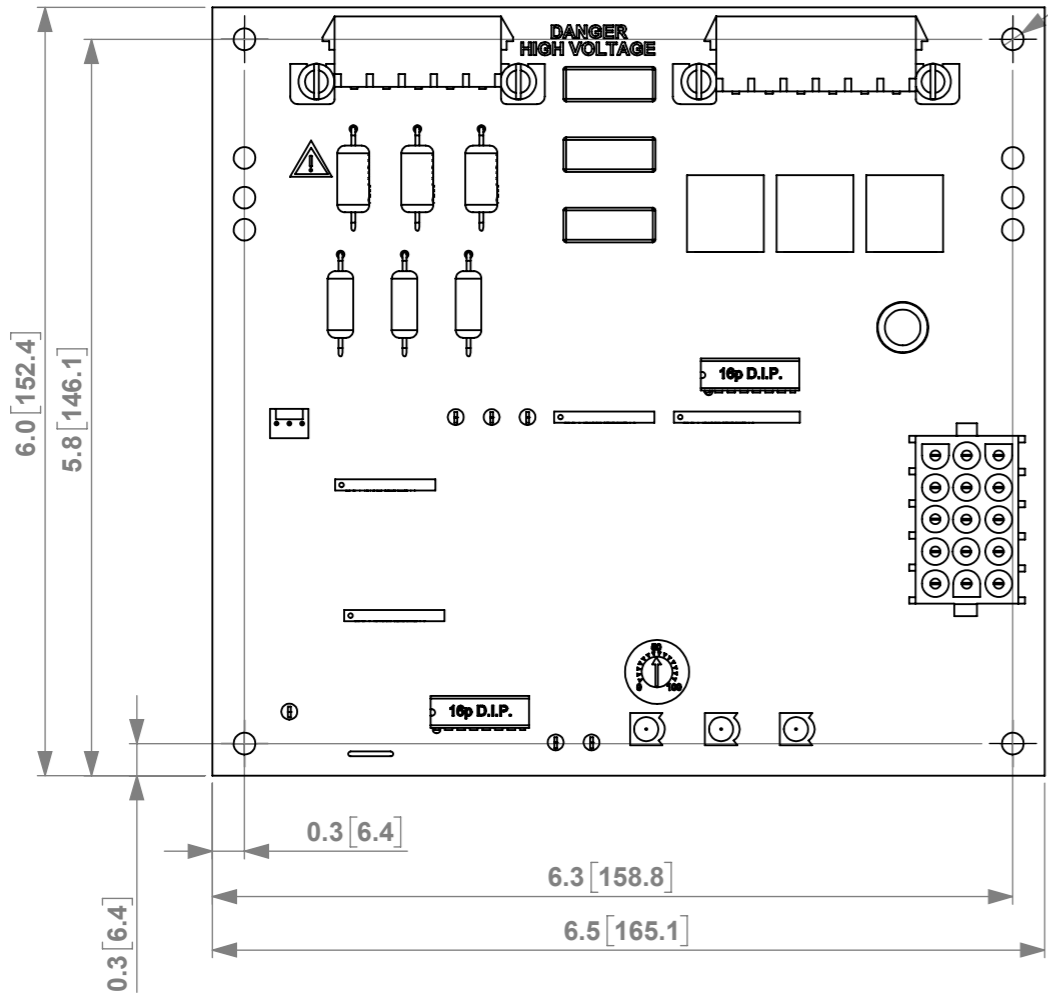


Revisions			
LTR	INT	Description	Date
A	KJM	Production Release per ECO #17-10770	6/5/17
B	MAI	Added weight of board per ECO #19-11114	9/11/19



0.8 [19.7]

Ø0.2 [4.3]  
(x4+plcs)



UNLESS OTHERWISE SPECIFIED: DIMENSIONS ARE IN INCHES/MM SURFACE FINISH: TOLERANCES: +/- .020" / .5mm LINEAR: ANGULAR:				FINISH:	DEBUR AND BREAK SHARP EDGES	DO NOT SCALE DRAWING	REVISION	B
DRAWN				NAME	SIGNATURE	DATE	TITLE:	
CHK'D				jp		4/15	FRS300 Semi-Converter Firing Board	
APPV'D							DWG NO.	
MFG							M2620	
Q.A							SCALE:1:1.5	
							SHEET 1 OF 1	
						WEIGHT: 0.4lbs		